



JULY 1998

1303.8

BUSINESS INDICATORS

**AUSTRALIAN
CAPITAL
TERRITORY**

EMBARGO: 11.30AM (CANBERRA TIME) MON 20 JULY 1998

C O N T E N T S

	<i>page</i>
Notes	2
Summary of findings	3
Selected business indicators	5
FEATURE ARTICLE	
Retirement and retirement intentions in the ACT	6

TABLES

1 Business expectations: Sales, September quarter 1998/ June quarter 1999, expected aggregate change	10
2 Business indicators, July 1998	11
3 ACT in relation to the rest of Australia	14
4 ACT in relation to the rest of Australia—percentage changes	15

- For further information about these and related statistics, contact Conrad Bulenda on Canberra 02 6207 0286 or any ABS office shown on the back cover of this publication.

NOTES

FORTHCOMING ISSUES

<i>ISSUE</i>	<i>RELEASE DATE</i>
August	17 August 1998
September	21 September 1998
October	19 October 1998
November	23 November 1998
December	22 December 1998

SYMBOLS AND OTHER USAGES

ACT	Australian Capital Territory
n.a.	not available
n.p.	not available for publication
p	preliminary
*	Represents data with a standard error of greater than 25%. Caution should be exercised when using this data.
—	nil or rounded to zero

Dalma Jacobs
Regional Director

SUMMARY OF FINDINGS

UPDATED SERIES

Series updated since the June 1998 issue are: labour force; job vacancies; industrial disputes; housing and construction; housing finance; retail turnover; tourist accommodation; motor vehicle registrations and business expectations. The feature article on pages 6–9 is on 'retirement and retirement intentions' in the ACT.

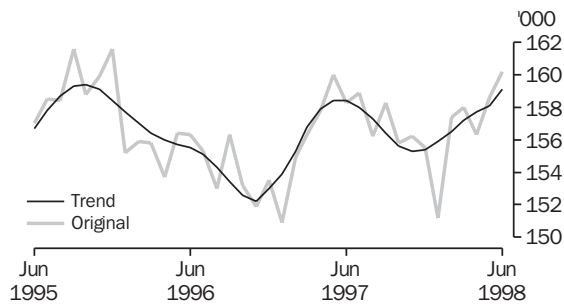
NOTABLE MOVEMENTS

Labour force	The June 1998 trend unemployment rate for the ACT fell by 0.1 percentage points from May to a level of 6.6% which is the lowest since June 1991. Trend employment increased (up 0.4% or 600 persons) in June 1998 and the participation rate rose 0.3 percentage points to 72.4%. Nationally, trend employment increased by 0.1% and the trend unemployment rate increased by 0.1 percentage point to 8.1%.
Job vacancies	There were 1,400 job vacancies in the ACT for the May quarter 1998 recording a 40% increase from both the previous quarter and from the corresponding quarter of the previous year. Nationally, job vacancies for May 1998 fell by 2.9% since the February quarter and increased 26.2% on the previous year.
Industrial disputes	For the 12 months ended March 1998 there were 17 working days lost per thousand employees in the ACT compared to a figure of 76 days nationally. There was no change from the previous period for the ACT as well as for Australia. There was a decrease of 86.8% and 37.7% on the number of working days lost per thousand employees from the previous year for the ACT and Australia respectively.
Housing and construction	<p>The trend number of dwelling units approved in the ACT decreased by 9.3% to 78 dwelling units in May 1998, the sixth consecutive monthly decrease. Nationally the total number of dwelling units approved increased by 0.3% in May 1998.</p> <p>The value of non-residential building approvals in the ACT was \$18.5 million in May 1998, an increase of \$12 million (up 184.6%) from the previous month and \$11.6 million (38.5%) lower than May 1997. Nationally, the value of non-residential building approvals increased by 18.2% from the previous month and was 60.0% higher than May 1997.</p>
Housing finance	The trend number of dwelling units financed (including refinancing) in the ACT during May 1998 decreased to 609 dwellings, a drop of 3.3% on the previous month. The trend estimate for the value of commitments in the ACT was \$68 million, a decrease of 4.2% on the previous month. Refinancing of existing dwellings comprised 17.2% of the total value of dwelling units financed in May 1998 which is an increase of 0.2% from the previous month (17%). Nationally, the trend number of dwelling units financed (including refinancing) during May 1998 was 40,256 which was an increase of 0.4% on the previous month while the trend estimate for the value of commitments decreased 0.3%.

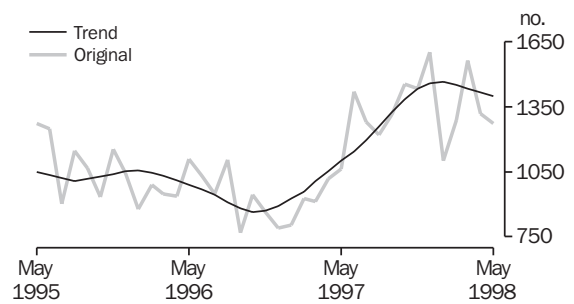
Retail turnover	The trend estimate for retail turnover in the ACT for May 1998 was \$216.7 million, up 0.1% on the previous month's figure and up 5.7% on twelve months ago. The national trend retail turnover recorded an increase of 0.2% on the previous month and was up 4.2% on a year ago.
Motor vehicle registrations	The trend estimate for ACT new motor vehicle registrations in May 1998 was 1,398, down 1.4% on the previous month, but up 27.1% on May 1997. Nationally, the trend for total new registrations in May 1998 recorded a 0.4% increase and showed continuous growth for the past fourteen months.
Tourist accommodation	<p>The room occupancy rate for ACT hotels, motels and guest houses in the March quarter 1998 was 64.8%, up 5 percentage points on twelve months ago. Nationally the room occupancy rate decreased 3% from the previous quarter and 3.8% from the corresponding quarter of the previous year.</p> <p>Takings from accommodation were \$24.3 million for the March quarter 1998 in the ACT, up 11.5% from the corresponding quarter of the previous year. Nationally, takings from accommodation increased 2.7% from the previous year to \$955.5 million.</p>
Business expectations	Business expectations in the ACT indicate a 2.7% increase in income from the sales of goods and services in the short term for the September quarter 1998. Nationally, there is an expected short term increase of 1.1% in the September quarter 1998. In the medium term (June quarter 1998 to June quarter 1999), growth of 6.9% in sales is expected for the ACT, which is well above that of the national expectation of 2.7%.

SELECTED BUSINESS INDICATORS

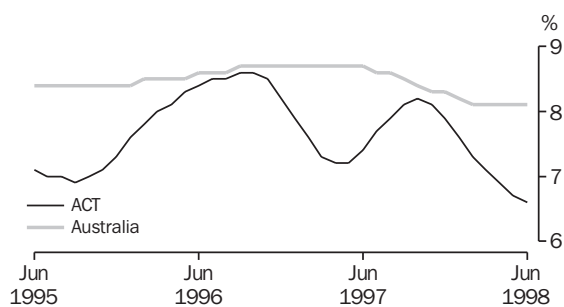
LABOUR FORCE—EMPLOYMENT



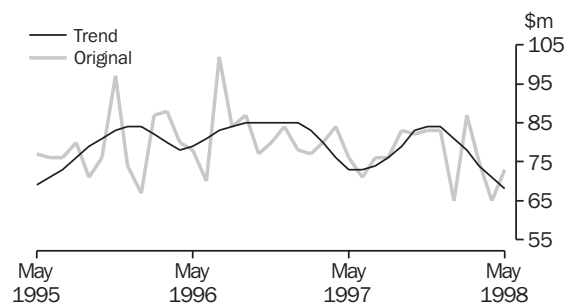
NEW MOTOR VEHICLE REGISTRATIONS



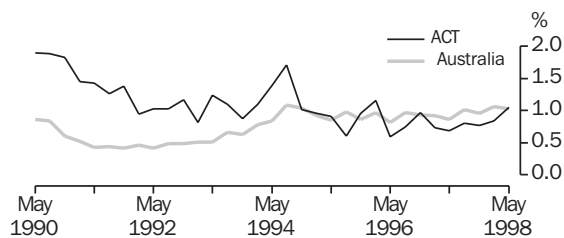
LABOUR FORCE—TREND UNEMPLOYMENT RATE



HOUSING FINANCE

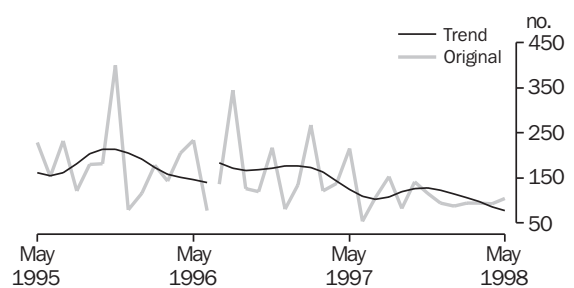


JOB VACANCY RATES



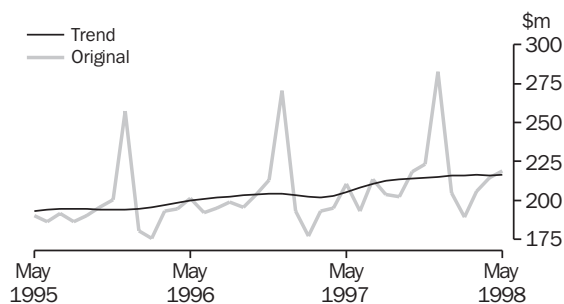
Notes: Job vacancy rate is calculated by expressing the number of job vacancies as a percentage of the number of employees plus vacancies.

BUILDING APPROVAL—DWELLING UNITS APPROVED



Notes: For the period July to December 1996, 165 dwelling units and total building work of \$40.5 million (16%) had been incorrectly omitted from data reported to ABS. All series for the ACT have been revised from July 1996 and a trend break has been included in the graph.

RETAIL TURNOVER



FEATURE ARTICLE

RETIREMENT AND RETIREMENT INTENTIONS IN THE AUSTRALIAN CAPITAL TERRITORY

RETIRED PEOPLE

At November 1997, there were 83,385 people aged 45 and over in the ACT, out of a population of 235,300 aged 15 and over. During the period 1992 to 1997 the population aged 45 and over in the ACT increased as a proportion of the population aged 15 and over, from 30.7% to 35.4%. The average annual growth rate of the population aged 45 and over for the period 1992–97 for the ACT was 4.3% compared to 2.8% nationally.

POPULATIONS USED—1992, 1994 AND 1997

	<i>Persons aged 45 and over</i>		<i>Persons aged 15 and over</i>		<i>Persons aged 45 and over who had retired from full-time work</i>	
	<i>ACT</i>	<i>Australia</i>	<i>ACT</i>	<i>Australia</i>	<i>ACT</i>	<i>Australia</i>
	no.	no.	no.	no.	no.	no.
October 1992	67 478	5 235 358	219 900	13 656 700	27 151	2 800 088
November 1994	78 306	5 771 480	229 000	14 004 200	34 147	3 146 058
November 1997	83 385	6 022 000	235 300	14 647 600	35 628	3 215 371
	%	%	%	%	%	%
Increase from 1992–97	23.6	15.0	7.0	7.3	31.2	14.8
Average annual growth rate 1992–97	4.3	2.8	1.4	1.4	5.6	2.8

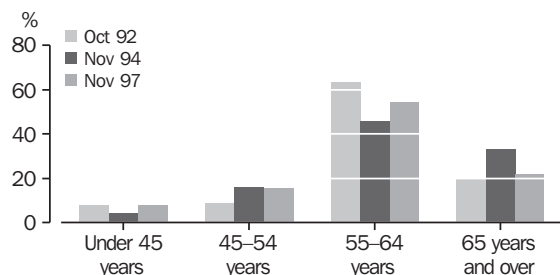
At November 1997 in the ACT, of those aged 45 and over, 43% had retired from full-time work as compared to 53% nationally. The characteristics of these persons were as follows:

- 60% were female, both nationally and in the ACT;
- the average age of retirement from full-time work in the ACT was 49 (58 for males and 43 for females), compared to 48 (58 for males and 41 for females) nationally;
- 32% had retired at an age less than 45, compared to 35% nationally;
- of those who retired from full-time work at an age less than 45, some 90% were female in the ACT compared to 92% nationally.
- the proportion who were working part-time or looking for part-time work was 19% (or 6767 persons) compared to 16% nationally.

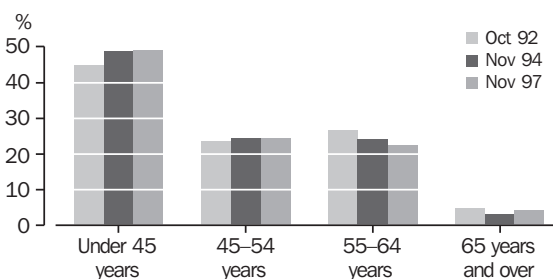
In November 1997, an estimated 14,385 males aged 45 and over had retired from full-time work in the ACT. In 1997 the pattern for the age of retirement in males was 8% who retired at an age 'less than 45' and 15.5% who retired at ages 45–54. The highest proportion was 54% in the '55–64 years' group followed by 22% who retired at an age 65 years and over. The pattern for males was similar for 1992, 1994 and 1997.

In 1997 for the 21,243 females aged 45 and over who retired from full-time work in the ACT, the pattern of retirement, was different to that of males. In 1997, 49% retired at an age 'less than 45 years'. Some 24% retired when aged 45–54 and 22% when aged 55–65. Only 4.3% of females retired when aged 65 and over. The pattern for females was similar in 1992, 1994 and 1997.

PROPORTION OF MALES WHO RETIRED FROM FULL-TIME WORK IN THE ACT BY AGE OF RETIREMENT

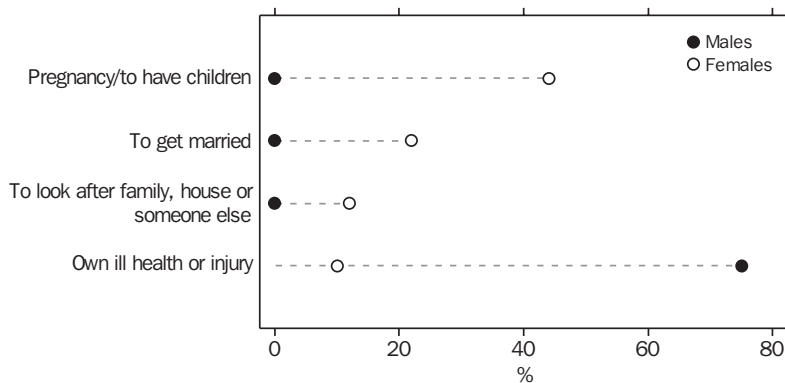


PROPORTION OF FEMALES WHO HAD RETIRED FROM FULL-TIME WORK IN THE ACT BY AGE OF RETIREMENT



Of the 11,560 persons who had retired aged less than 45 years, 90% were females. Some 78% of females said that they ceased working their last full-time job at an age less than 45 to get married, to have children or look after family, house or someone else, while 75% of males said that they left last full-time work because of own ill-health or injury.

REASONS FOR CEASING LAST FULL-TIME JOB—NOVEMBER 1997,
Males and females aged 45 and over who had retired aged less than 45



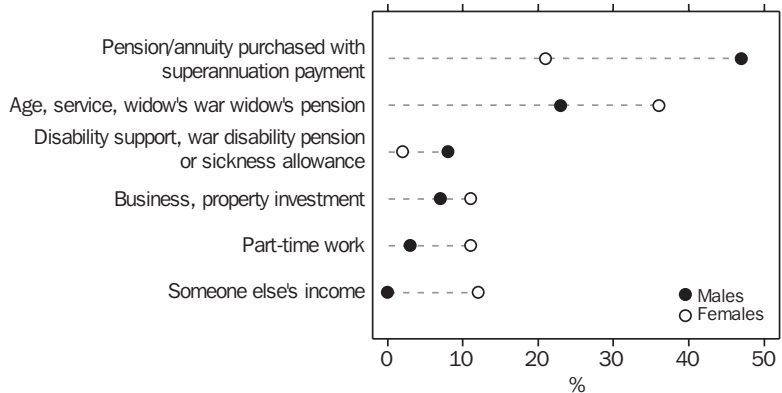
Of the 24,068 persons who had retired at an age of 45 and over, 32% of females and 41% of males claimed that they ceased their last full-time job at an aged 45 and over because they had reached compulsory age of retirement or reached appropriate age of retirement or were too old. Some 11% of females and 20% of males said that the reason was their 'own ill health or injury'. 'Early retirement package or eligible for superannuation' was claimed as the reason by 8% of females and 19% of males.

REASONS FOR CEASING LAST FULL TIME JOB—NOVEMBER 1997,
Males and females aged 45 and over who had retired aged 45 and over



At November 1997 in the ACT there were 24,068 persons aged 45 and over who had retired from full-time work at an age of 45 years and over. The main source of income for these persons was somewhat different in males and females as seen in the graph below.

SOURCES OF INCOME AFTER RETIREMENT—ACT, NOVEMBER 1997,
Males and females 45 years and over who had retired aged 45 and over

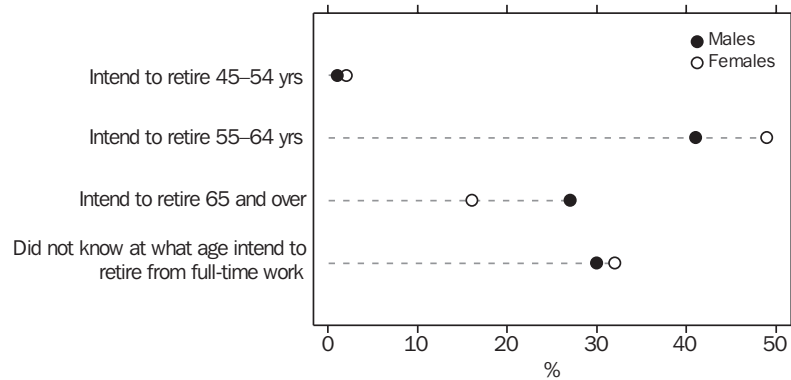


RETIREMENT INTENTIONS

At November 1997 in the ACT, there were 39,979 persons aged 45 and over in the ACT who intended to retire from full-time work. Some 40% said that they intended to retire from full-time work and continue to work part-time. Of this group 67% were male. Some 60% of persons who intended to retire also intended to leave the labour force. A further 4,216 persons said that they did not intend to retire.

Most persons (17,853) intended retiring from full-time work when aged 55–64. Of this group 54% were males. Of the 9,038 persons who intended retiring aged 65 and over, 70% were males.

PERSONS AGED 45 AND OVER IN FULL TIME WORK,
By age intend to retire from full time work—November 1997



RETIREMENT SCHEME MEMBERSHIP

In the ACT at November 1997, of the 24,068 persons aged 45 and over who had retired from full-time work aged 45 or more, 73% belonged to a retirement scheme. Of this group 63% were males. At November 1994, of 23,303 persons aged 45 and over who had retired from full-time work, 67% belonged to a retirement scheme.

In November 1997, of the 39,979 persons aged 45 and over in full-time work who intend to retire from full-time work, 97% belonged to a retirement scheme. Of this group 58% were males. The corresponding figures for 1994 were 93% of 36,869 persons of which 63% were male.

1

BUSINESS EXPECTATIONS: SALES, SEPTEMBER QUARTER 1998/ JUNE QUARTER 1999, EXPECTED AGGREGATE CHANGE

	<i>ACT</i>	<i>Aust.</i>
<i>Period</i>	%	%
Short-term		
Mar qtr 1997–Jun qtr 1997	1.3	1.6
Jun qtr 1997–Sep qtr 1997	–1.7	0.7
Sep qtr 1997–Dec qtr 1997	0.6	3.0
Dec qtr 1997–Mar qtr 1998	–1.1	–0.3
Mar qtr 1998–Jun qtr 1998	–0.1	1.7
Jun qtr 1998–Sep qtr 1998	2.7	1.1
Medium-term		
Mar qtr 1997–Mar qtr 1998	5.5	2.9
Jun qtr 1997–Jun qtr 1998	2.0	2.4
Sep qtr 1997–Sep qtr 1998	1.2	3.9
Dec qtr 1997–Dec qtr 1998	2.9	3.0
Mar qtr 1998–Mar qtr 1999	2.6	2.6
Jun qtr 1998–Jun qtr 1999	6.9	2.7

BUSINESS INDICATORS, JULY 1998							
Indicator	Unit	ACT			Aust.		
		Latest figure	% change from		Latest figure	% change from	
			Previous period	Same period previous year		Previous period	Same period previous year
POPULATION, VITAL AND LABOUR							
POPULATION, Dec qtr 97	'000	309.0	-0.1	0.2	18 631.1	0.2	1.1
Natural increase	no.	951	87.9	21.8	31 861	22.3	2.5
Net migration	no.	-1 189	10.9	11.3	10 618	-65.0	-57.2
Total increase	no.	-238	-58.0	-17.1	42 479	-24.7	-24.0
LABOUR FORCE, June 98							
Original Series							
Employed	'000	160.2	1.0	1.2	8 609.8	0.4	2.3
Unemployed	'000	10.0	-11.5	-18.7	735.6	-0.4	-2.0
Unemployment rate	%	5.9	-0.8	-1.3	7.9	—	-0.3
Participation rate	%	72.3	0.2	-0.4	63.3	0.2	0.3
Long-term unemployed, May 98	no.	2 995	8.6	40.8	231 432	-1.9	-2.9
Long-term unemployed as percentage of total unemployed	—	26.4	2.3	8.2	31.3	-0.7	1.2
Trend series							
Employed	'000	159.1	0.4	0.4	8 578.1	0.1	2.2
Unemployed	'000	11.2	-1.8	-11.8	755.7	0.3	-5.3
Unemployment rate	%	6.6	-0.1	-0.8	8.1	—	-0.6
Participation rate	%	72.4	0.3	-0.5	63.2	—	—
WAGE AND SALARY EARNERS, Nov 97							
Trend series							
Public Sector	'000	70.3	1.6	0.6	1 477.0	—	-0.9
Private Sector	'000	66.9	-5.1	0.6	5 363.4	-0.1	1.1
Total	'000	137.2	-1.8	0.6	6 840.4	-0.1	0.7
JOB VACANCIES, May 98	'000	1.4	40.0	40.0	73.3	-2.9	26.2
INDUSTRIAL DISPUTES IN PROGRESS, Mar 98							
Working days lost	'000	0.0	-100.0	—	50.2	27.4	6.6
Days lost per '000 employees (year ended Mar 98)	no.	17.0	—	-86.8	76.0	—	-37.7
BUILDING AND CONSTRUCTION							
HOUSING FINANCE, May 98							
Secured commitments to individuals for							
Original Series							
Construction of dwellings	\$m	5.5	25.0	-30.4	709.0	1.0	5.3
Purchase of new dwellings	\$m	3.7	76.2	-39.3	223.0	-3.5	-14.2
Purchase of established dwellings	\$m	51.3	7.3	7.8	3 661.0	0.5	—
Re-financing	\$m	12.6	13.5	-10.0	767.0	4.1	-6.0
Total housing commitments	\$m	73.1	11.9	-3.4	4 592.0	0.3	—
Seasonally adjusted series							
Total housing commitments	\$m	71.0	12.7	2.9	4 415.0	-6.5	3.0
Trend series							
Dwelling units financed	no.	609	-3.3	-11.7	40 256	0.4	-0.5
Total housing commitments	\$m	68.0	-4.2	-6.8	4 489.0	-0.3	3.2
BUILDING APPROVALS, May 98							
Original series							
Dwelling units	no.	105	12.9	-51.4	13 958	0.3	2.5
Value of new residential	\$m	13.5	16.4	-44.2	1 519.3	-2.2	3.3
Value of residential alterations and additions	\$m	4.4	-17.0	12.8	292.2	4.1	27.5
Value of non-residential	\$m	18.5	184.6	-38.5	1 476.9	18.2	60.0
Value of total building	\$m	36.4	52.9	-37.5	3 288.4	6.7	25.4
Trend series							
Dwelling units	no.	78	-9.3	-37.6	13 599	0.3	14.9

		ACT			Aust.		
		% change from			% change from		
		Same period previous year			Same period previous year		
Indicator	Unit	Latest figure	Previous period		Latest figure	Previous period	
BUILDING AND CONSTRUCTION <i>continued</i>							
BUILDING COMMENCEMENTS, Dec qtr 97							
New houses	no.	297	28.0	6.1	26 504	11.2	23.9
Value of houses commenced	\$m	37.6	52.2	18.2	2 996.0	10.9	27.6
Value of non-residential building commenced	\$m	65.6	16.1	-41.0	3 410.8	-7.2	8.0
Value of total commencements	\$m	126.6	28.7	-25.6	8 387.3	2.3	18.8
PRICE INDEXES							
Established house price index, Dec qtr 97	—	127.1	0.7	2.3	124.2	2.5	7.7
ENGINEERING CONSTRUCTION (Dec Qtr 97)							
Private sector							
Value of work commenced	\$m	15.1	84.1	13.5	2 751.0	-2.4	30.5
Value of work done	\$m	18.9	136.3	71.8	2 724.9	16.3	20.9
Value of work yet to be done	\$m	6.9	-69.2	-78.8	6 521.1	3.6	24.4
Value of work done by public sector	\$m	18.2	15.9	-12.9	1 424.7	12.0	-5.6
PRICES, WAGES AND CONSUMER SPENDING							
CONSUMER PRICE INDEX , Mar qtr 98							
Food	(a)	125.3	0.3	2.7	122.1	0.8	1.6
Housing	(a)	93.3	-0.4	-9.8	93.4	-0.8	-6.8
Transportation	(a)	129.0	—	-2.2	122.9	-0.9	-1.8
All groups	(a)	120.6	0.7	-0.7	120.3	0.3	-0.2
AVERAGE WEEKLY EARNINGS, Feb 98							
Original series							
Males	\$	822.8	4.3	5.9	715.6	0.9	3.9
Females	\$	611.1	3.6	6.0	470.1	0.9	2.7
Persons	\$	719.0	3.9	5.8	597.4	0.8	2.7
Trend series							
Males	\$	811.7	2.2	5.3	714.3	1.2	4.4
Females	\$	605.9	2.4	7.0	469.0	0.7	3.4
Persons	\$	711.3	2.5	6.4	595.9	0.9	3.5
RETAIL TURNOVER, May 98							
Original series							
Food retailing	\$m	81.5	2.4	3.7	4 595.1	1.1	3.6
Department stores	\$m	24.5	-1.2	—	981.7	0.1	-1.3
Hospitality and services	\$m	37.0	1.4	13.8	1 905.1	2.5	5.5
All other retailing	\$m	75.9	7.1	1.1	3 725.9	3.9	0.8
Total	\$m	218.9	3.4	3.9	11 207.8	2.2	2.5
Trend series							
Food retailing	\$m	80.9	—	5.9	4 634.8	0.1	5.4
Department stores	\$m	24.0	-0.4	4.3	1 002.5	-0.1	4.7
Hospitality and services	\$m	35.9	2.0	15.1	1 909.4	1.0	3.9
All other retailing	\$m	75.9	-0.5	1.9	3 819.4	—	2.8
Total	\$m	216.7	0.1	5.7	11 366.1	0.2	4.2

(a) Base year: 1989-90=100.0.

		ACT			Aust.		
		% change from			% change from		
		Same period previous year			Same period previous year		
Indicator	Unit	Latest figure	Previous period		Latest figure	Previous period	
TOURISM AND TRANSPORT							
HOTELS, MOTELS AND GUEST HOUSE ACCOMMODATION, Mar qtr 98							
Original series							
Room nights	'000	242.8	n.a	7.7	9 056.0	-4.1	0.8
Takings at current prices	\$m	24.3	n.a	11.5	955.5	n.a	2.7
Guest arrivals	'000	189.9	n.a	n.a	7 299.2	n.a	n.a
Guest nights	'000	415.7	n.a	n.a	16 051.3	n.a	n.a
Room occupancy rate (Mar qtr 98)	%	64.8	n.a	5.0	58.0	-3.0	-3.8
NEW MOTOR VEHICLE REGISTRATIONS, May 98							
Motor vehicles	no.	1 273	-3.4	19.9	65 050	7.3	11.0
Seasonally adjusted motor vehicles	no.	1 344	-5.7	28.1	64 314	-4.2	13.6
Trend motor vehicles	no.	1 398	-1.4	27.1	64 908	0.4	12.1
AGGREGATE INDICATORS							
STATE ACCOUNTS, 1996-97(a)							
Original series (at average 1989-90 prices)							
Private final consumption expenditure	\$m	4 981	3.6	—	269 954	2.4	—
Government final consumption expenditure	\$m	5 744	-2.7	—	72 844	1.5	—
Private gross fixed capital expenditure	\$m	755	2.6	—	85 505	12.1	—
Government gross fixed capital expenditure	\$m	593	24.6	—	18 685	-5.6	—
Final demand	\$m	11 972	-0.4	—	446 989	3.6	—
Gross state product	\$m	8 813	0.6	—	450 575	3.0	—
Original series (at current prices)							
Private final consumption expenditure	\$m	5 781	4.0	—	318 480	4.0	—
Government final consumption expenditure	\$m	7 011	0.6	—	86 421	3.6	—
Private gross fixed capital expenditure	\$m	804	-1.6	—	86 304	7.9	—
Government gross fixed capital expenditure	\$m	440	-14.6	—	19 230	-5.2	—
Final demand	\$m	14 037	1.3	—	510 435	4.2	—
Gross state product	\$m	10845	5.0	—	516 306	4.9	—

(a) Quarterly state final demand details are released as a special data service (product no. 5206.0.40.001).

Source: ABS Catalogue nos: 3101.0, 5242.0, 5609.0, 6202.0, 6203.0, 6302.0, 6321.0, 6354.0, 6401.0, 6408.0, 6416.0, 8501.0, 8634.0, 8635.8, 8731.0, 8752.0, 9214.0, 9301.0.

<i>Indicator</i>	<i>Unit</i>	<i>Latest period</i>	<i>NSW</i>	<i>Vic.</i>	<i>Qld</i>	<i>SA</i>	<i>WA</i>	<i>Tas.</i>	<i>NT</i>	<i>ACT</i>	<i>Aust.</i>
POPULATION	'000	Dec qtr 97	6 306.3	4 627.3	3 430.4	1 482.9	1 811.1	471.8	189.2	309.0	18 631.1
LABOUR FORCE											
Employed persons (trend)	'000	Jun 98	2 849.8	2 151.0	1 617.0	638.9	883.6	197.8	87.1	159.1	8 578.1
Unemployment rate (trend)	%	Jun 98	7.5	8.4	8.5	10.0	7.0	10.5	5.2	6.6	8.1
WAGE AND SALARY EARNERS											
Public sector (trend)	'000	Nov 97	473.7	318.8	284.9	118.3	146.7	41.7	22.7	70.3	1 477.0
Private sector (trend)	'000	Nov 97	1 883.1	1 432.7	895.8	386.1	534.0	115.8	49.1	66.9	5 363.4
Total public and private sector (trend)	'000	Nov 97	2 356.8	1 751.5	1 180.7	504.3	680.6	157.5	71.8	137.2	6 840.4
STATE ACCOUNTS(a)											
Gross state product at average 1989-90 prices	\$m	Year 1996-97	152 378	118 338	74 768	31 094	50 665	8 910	4 945	4 981	269 954
Gross state product at current prices	\$m	Year 1996-97	181 799	133 567	83 366	36 306	54 418	10 587	5 418	5 744	72 844
BUILDING APPROVALS											
Dwelling units approved	no.	May 98	4 651	3 356	3 066	602	1 794	128	256	105	13 958
Dwelling units approved (trend)	no.	May 98	4 469	3 377	3 087	610	1 659	129	209	78	13 599
Value of non-residential building approved	\$m	May 98	640.0	292.3	326.8	38.2	106.1	14.6	39.9	18.5	1 476.9
Value of all buildings approved	\$m	May 98	1 335.0	735.7	655.0	102.6	318.3	29.0	76.4	36.4	3 288.4
ENGINEERING CONSTRUCTION											
Value of engineering construction work done	\$m	Dec qtr 97	1 240.3	679.2	934.2	299.4	852.4	47.8	59.2	37.2	4 149.7
AVERAGE WEEKLY EARNINGS											
Full-time adult ordinary time (trend)	\$	Feb 97	744.9	716.7	684.3	675.4	720.4	692.2	733.6	837.7	720.8
RETAIL TRADE											
Retail turnover (trend)	\$m	May 98	3 974.4	2 627.1	2 156.4	867.6	1 139.0	261.1	123.6	216.7	11 366.1
HOTELS, MOTELS & GUEST HOUSE ACCOMMODATION											
Room nights occupied	'000	May 98	3 017.3	1 534.1	2 302.2	517.4	872.3	334.3	235.6	242.8	9 056.0
Room occupancy rate	%	May 98	59.8	60.1	54.3	59.2	58.5	67.3	44.1	64.8	58.0
NEW MOTOR VEHICLE REGISTRATIONS											
Trend	no.	May 98	21 991	16 087	11 967	4 361	7 017	1 348	740	1 398	64 908
	<i>Unit</i>	<i>Latest period</i>	<i>Syd.</i>	<i>Melb.</i>	<i>Bris.</i>	<i>Adel.</i>	<i>Perth</i>	<i>Hob.</i>	<i>Dar.</i>	<i>Canb.</i>	<i>Aust.</i>
CONSUMER PRICE INDEX											
Food	(b)	Mar qtr 98	122.8	120.7	122.6	122.9	122.7	121.7	124.4	125.3	122.1
Housing	(b)	Mar qtr 98	100.3	84.1	100.0	89.9	88.5	95.3	111.6	93.3	93.4
Transportation	(b)	Mar qtr 98	124.2	122.1	122.8	121.2	121.2	121.7	122.0	129.0	122.9
All Groups	(b)	Mar qtr 98	120.7	119.6	121.9	121.7	118.0	121.5	121.5	120.6	120.3
Average retail prices (cents)											
Milk, carton, supermarket sales	1 litre	Mar qtr 98	116	135	117	127	135	125	123	115	n.a.
Bread, white loaf, sliced, supermarket sales	680 g	Mar qtr 98	206	191	191	165	192	185	208	200	n.a.
Beef, rump steak	1 kg	Mar qtr 98	1 186	1 008	1 079	1 197	1 067	998	1 259	1 101	n.a.
Chicken, frozen	1 kg	Mar qtr 98	364	347	328	362	351	376	440	340	n.a.
Potatoes	1 kg	Mar qtr 98	108	118	107	69	119	91	125	114	n.a.
Coffee, instant (jar)	150 g	Mar qtr 98	650	647	656	588	670	697	616	657	n.a.
Scotch nip, public bar	30 ml	Mar qtr 98	338	303	259	356	372	262	326	256	n.a.
Private motoring petrol											
Leaded	1 litre	Mar qtr 98	73.2	70.2	63.9	71.5	74.2	80.0	82.4	75.3	n.a.
Unleaded	1 litre	Mar qtr 98	71.0	68.0	61.7	69.2	72.0	78.0	80.4	73.1	n.a.

(a) State estimates are not comparable to national estimates from the June quarter 1995 due to revised methodology used in *Australian National Accounts, State Accounts* (Cat. no. 5242.0).

(b) Base year: 1989-90=100.0.

4

ACT IN RELATION TO THE REST OF AUSTRALIA—PERCENTAGE CHANGES

<i>Indicator</i>	<i>Latest period</i>	<i>NSW</i>	<i>Vic.</i>	<i>Qld</i>	<i>SA</i>	<i>WA</i>	<i>Tas.</i>	<i>NT</i>	<i>ACT</i>	<i>Aust.</i>
POPULATION	Dec qtr 97	0.2	0.2	0.4	0.1	0.3	-0.2	0.3	-0.1	0.2
LABOUR FORCE										
Employed persons (trend)	Jun 98	0.2	0.2	0.1	-0.4	0.3	0.1	0.1	0.4	0.1
Unemployment rate (trend)	Jun 98	—	—	—	—	—	—	-0.1	-0.1	—
WAGE AND SALARY EARNERS										
Pubic sector (trend)	Nov 97	0.8	-0.9	-0.2	-0.5	0.2	-0.7	-1.3	1.6	—
Private sector (trend)	Nov 97	-1.2	1.4	-1.0	1.4	1.7	-3.3	0.8	-5.1	-0.1
Total public and private sector (trend)	Nov 97	-0.8	0.9	-0.8	0.9	1.3	-2.7	0.1	-1.8	-0.1
STATE ACCOUNTS(a)										
State final demand at 1989-90 prices (trend)	Yr 1996-97	2.8	2.6	5.2	0.8	3.3	0.2	4.6	3.6	2.4
State final demand at current prices (trend)	Yr 1996-97	6.2	4.2	5.7	1.0	4.2	2.7	7.3	-2.7	1.5
BUILDING APPROVALS										
Dwelling units approved (original)	May 98	-5.9	1.3	-4.2	19.9	13.8	-3.8	61.0	12.9	0.3
Dwelling units approved (trend)	May 98	-0.1	1.3	-1.9	-1.9	1.9	-0.8	1.0	-9.3	0.3
Value of non-residential building approved	May 98	21.4	-3.4	7.0	10.4	150.8	71.8	82.2	184.6	18.2
Value of all buildings approved	May 98	5.7	-2.1	-2.5	16.2	46.0	29.5	76.4	52.9	6.7
ENGINEERING CONSTRUCTION										
Value of engineering construction work done	Dec qtr 97	16.1	3.7	6.4	18.5	32.9	1.5	18.6	57.0	14.8
AVERAGE WEEKLY EARNINGS										
Full-time adult ordinary time (trend)	Feb 97	0.9	0.8	1.5	1.4	0.8	1.4	1.9	2.0	1.1
RETAIL TRADE										
Retail turnover (trend)	May 98	-0.1	0.2	0.9	0.7	0.2	-0.4	1.1	0.1	0.2
HOTELS, MOTELS & GUEST HOUSE ACCOMMODATION										
Room nights occupied (trend)	May 98	n.a	n.a	n.a	n.a	n.a	n.a	n.a	n.a	n.a
Room occupancy rate (original)	May 98	59.8	60.1	54.3	59.2	58.5	67.3	44.1	64.8	58.0
NEW MOTOR VEHICLE REGISTRATIONS										
Trend	May 98	0.5	0.6	-1.0	1.0	2.1	1.0	-1.6	-1.4	0.4
<i>Indicator</i>	<i>Latest period</i>	<i>Syd.</i>	<i>Melb.</i>	<i>Bris.</i>	<i>Adel.</i>	<i>Perth</i>	<i>Hob.</i>	<i>Dar.</i>	<i>Canb.</i>	<i>Aust.</i>
CONSUMER PRICE INDEX										
Food	Mar qtr 98	1.0	0.8	1.2	0.7	0.6	—	1.7	0.3	0.8
Housing	Mar qtr 98	0.2	-3.2	-0.2	-0.3	-0.3	-0.2	0.3	-0.4	-0.8
Transportation	Mar qtr 98	-0.4	-1.8	-1.0	-0.9	-0.2	-0.3	-0.3	0.0	-0.9
All Groups	Mar qtr 98	0.5	-0.2	0.4	0.4	0.3	0.2	0.6	0.7	0.3
Average retail prices (cents)										
Milk, carton, supermarket sales	Mar qtr 98	—	1.5	-0.8	2.4	—	—	0.8	0.0	n.a.
Bread, white loaf, sliced, supermarket sales	Mar qtr 98	3.0	1.6	-2.1	1.2	2.7	-2.1	6.1	1.0	n.a.
Beef, rump steak	Mar qtr 98	-3.3	-4.0	-0.6	9.0	1.4	2.3	4.0	-2.0	n.a.
Chicken, frozen	Mar qtr 98	0.3	-2.8	-8.6	3.1	-4.6	-4.6	14.0	-2.3	n.a.
Potatoes	Mar qtr 98	-11.5	-16.9	-6.1	-33.7	-0.8	9.6	-11.3	-8.8	n.a.
Coffee, instant (jar)	Mar qtr 98	2.4	2.2	—	-0.7	2.1	—	-3.8	2.3	n.a.
Scotch nip, public bar	Mar qtr 98	1.2	1.3	1.2	0.6	1.6	1.2	0.3	-11.4	n.a.
Private motoring petrol										
Leaded	Mar qtr 98	-2.9	-6.3	-6.2	-4.7	-2.1	-1.6	-0.2	-0.4	n.a.
Unleaded	Mar qtr 98	-3.0	-6.6	-6.4	-4.7	-2.3	-1.6	-0.2	-0.4	n.a.

(a) State estimates are not comparable to national estimates from the June quarter 1995 due to revised methodology used in *Australian National Accounts, State Accounts* (Cat. no. 5242.0).

SELF-HELP ACCESS TO STATISTICS

<i>PHONE</i>	Call 1900 986 400 for the latest statistics on CPI, Labour Force, Earnings, National Accounts, Balance of Payments and other topics. (Call cost is 75c per minute)
<i>INTERNET</i>	http://www.abs.gov.au
<i>LIBRARY</i>	A range of ABS publications is available from public and tertiary libraries Australia wide. Contact your nearest library to determine whether it has the ABS statistics you require.

WHY NOT SUBSCRIBE?

<i>PHONE</i>	+61 1300 366 323
<i>FAX</i>	+61 3 9615 7848

CONTACTING THE ABS

ABS provides a range of services, including: a telephone inquiry service; information consultancy tailored to your needs; survey, sample and questionnaire design; survey evaluation and methodological reviews; and statistical training.

<i>INQUIRIES</i>	<i>By phone</i>	<i>By fax</i>
Canberra	02 6252 6627	02 6253 1404
Sydney	02 9268 4611	02 9268 4668
Melbourne	03 9615 7755	03 9615 7798
Brisbane	07 3222 6351	07 3222 8283
Perth	08 9360 5140	08 9360 5955
Adelaide	08 8237 7400	08 8237 7566
Hobart	03 6222 5800	03 6222 5995
Darwin	08 8943 2111	08 8981 1218

POST Client Services, ABS, PO Box 10, Belconnen, ACT 2616

EMAIL client.services@abs.gov.au



2130380007981
ISSN 1320-808X

RRP \$15.50